

# PRODUCT SUBMITTAL

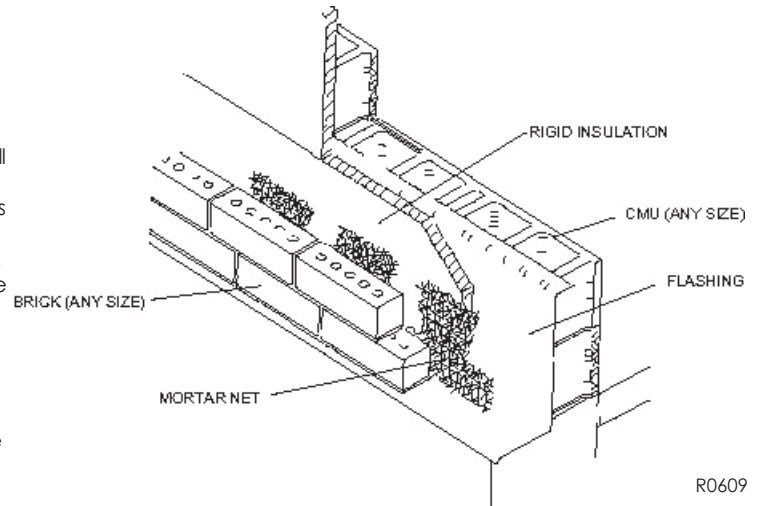
## Mortar Net<sup>®</sup>

### DESCRIPTION

**MORTAR NET<sup>®</sup>** For traditional brick masonry cavity-wall construction. Made of tough polyester mesh, its patented "dovetail" shape captures mortar droppings on two levels so they can't form a solid dam. In addition, its 90% open-weave mesh lets water flow, unobstructed, to weep holes and lets air circulate freely within the cavity.

### SHORT FORM SPEC

Provide polyester mesh dovetail configuration to maintain airflow and drainage while suspending mortar droppings at unequal heights. Provide one or more thickness as required to fill cavity width. Install per manufacturer's instructions.



Product: Subject to compliance with requirements, provide "Mortar Net<sup>®</sup>" by Mortar Net USA, Ltd.

### MANUFACTURER

**Mortar Net USA, Ltd.**  
326 Melton Road, Burns Harbor, IN 46304  
Telephone: (800)664-6638  
Fax: (219)787-5088  
Email: info@mortarnet.com  
Website: www.MortarNet.com

*Specifier Note: The Mortar Net<sup>®</sup> is manufactured of nylon, high density polyethylene (HDPE) or polyester, fabricated in a 90% open mesh, 2", 1" or 0.4" (51, 25.4, or 10.2 mm) thick. It has no negative reaction to PVC, polyethylene, polystyrenes, copper, lead, rubberized asphalt, or stainless steel, and will not degrade or decompose over the life of the building. It will not absorb or trap moisture and water, and is treated with an antimicrobial and will not support mold or fungus. The Mortar Net<sup>®</sup> is patented, US Patent Reissue #36676.*

### SUBSTITUTIONS

No substitutions permitted

- Mortar Net MN 10-4: 10" (254 mm) high x 0.4" (10.2 mm) thick material.
- Mortar Net MN 10-1: 10" (254 mm) high x 1" (25.4 mm) thick material.
- Mortar Net MN 10-2: 10" (254 mm) high x 2" (51 mm) thick material.

DATE: \_\_\_\_\_

PROJECT: \_\_\_\_\_

FIRM: \_\_\_\_\_ PHONE: \_\_\_\_\_

APPROVAL: \_\_\_\_\_ DATE: \_\_\_\_\_

GENERAL CONTRACTOR: \_\_\_\_\_

BID DATE: \_\_\_\_\_

COMMENTS: \_\_\_\_\_

\_\_\_\_\_  
\_\_\_\_\_  
\_\_\_\_\_